

INCREDISEAL™

Advanced Air



ADVANCED AIR CART

with Winder Instructions

888 . 496 . 2747

Sales@IncrediSeal.com

IncrediSeal.com

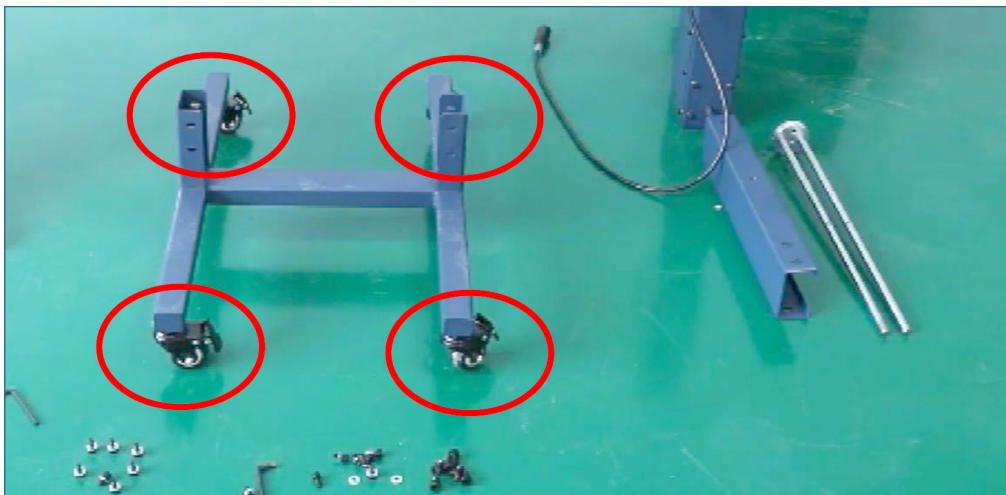
16 Stenersen Lane

Suite 4B

Hunt Valley, MD 21030

ASSEMBLY INSTRUCTIONS FOR THE INCREDISEAL[®] ADVANCED AIR AUTO WINDER

- 1 Install the casters into the base.



- 2 Install the upright supports into the base. Use 4 bolts on each support, two on each side. Hand tighten each bolt first. Tighten each bolt with hex wrench once all bolts are in place.

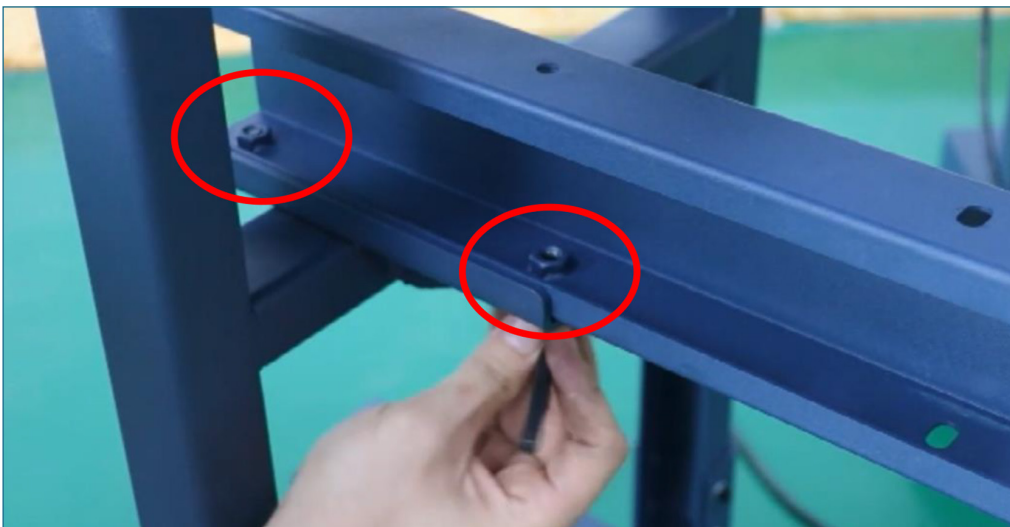


3

Place table on top of support legs. Gently position table in place until all holes are aligned with support legs. Screw four bolts by hand into each table leg, 2 on each side. Tighten each bolt with hex wrench once all bolts are in place.

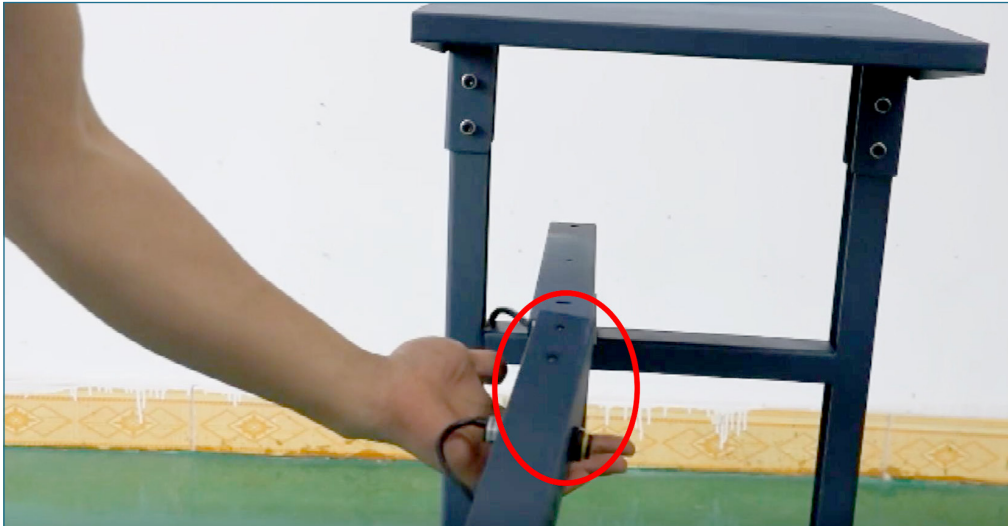
**4**

Place winder arm sleeve onto bracket between support legs. Hand tighten 2 bolts into the bottom of the bracket. Tighten each bolt with hex wrench once all bolts are in place.

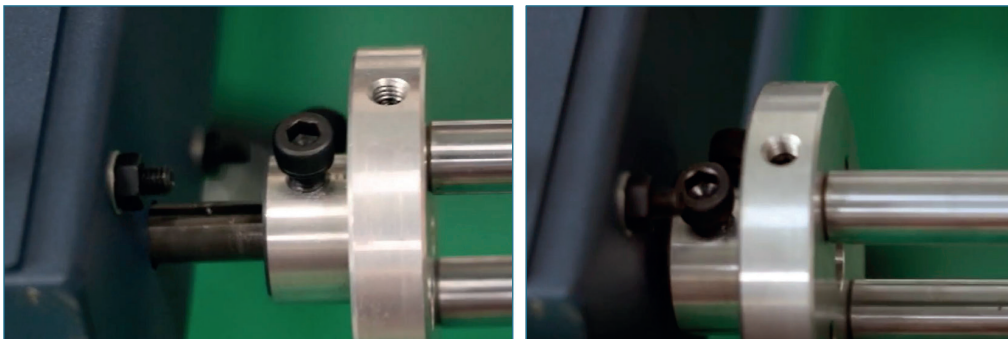


5

Place winder arm into winder arm sleeve. Take care to keep cord in the inside middle of the sleeve. Do not place cord under the sleeve. Screw 2 bolts into the top and 2 into the bottom of the sleeve by hand. Tighten each bolt with hex wrench once all bolts are in place.

**6**

Push roll winder all the way onto winder pin. Tighten bolts by hand. Tighten each bolt with hex wrench once all bolts are in place.



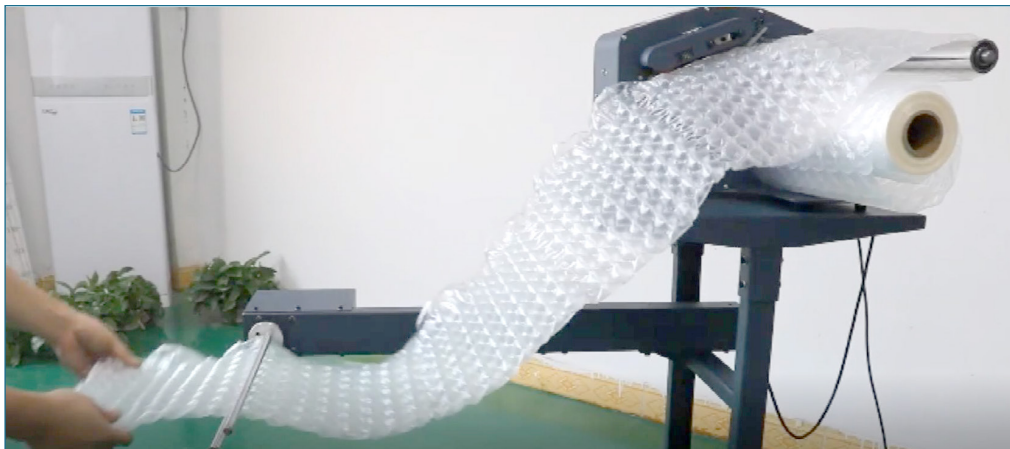
7

Plug winder power cord into back of Advanced Air System machine.



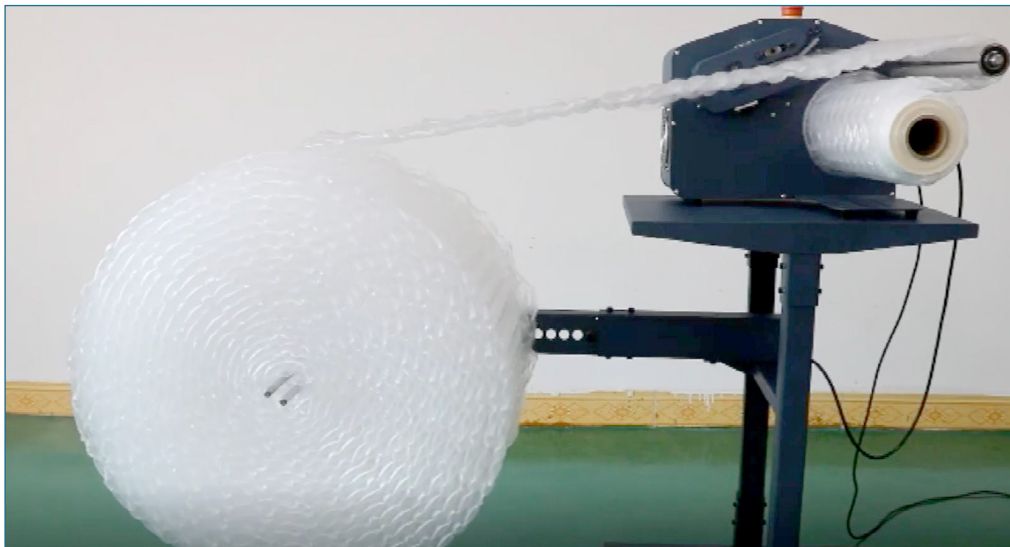
8

Thread air pillow film between winder rods. Winder will spin counter-clockwise.



9

Turn on winder, turn on air pillow machine.



TO WATCH ASSEMBLY VIDEO VISIT

<https://www.incrediseal.com/af380-advanced-air-system.html>

Scroll down to Product Details, Spec & Videos Tab

INCREDISEAL™
Advanced Air

Search entire store here...

Sign In Cart

HOME CARTON SEALING TAPE DOUBLE SIDED TAPE SPECIALTY TAPE **ADVANCED AIR SYSTEM** TESTING QUALITY CONTACT

Home > AF380 Advanced Air System

AF380 Advanced Air System

Be the first to review this product

Add to Cart Qty 1

Versatile system produces multiple dunnage types to meet all your void fill and protection needs. Compact 16" L x 24" W x 14" H foot print creates an efficient, organized work space. Variable speed and pressure controls adapt to your work flow & packing requirements. Max. sealing speed: 90 ft. / minute. Fast, light weight, cost saving packaging and protection. Call 888-496-2747 or email sales@IncrediSeal.com for a demonstration.

Availability In stock
SKU AF380
\$1,297.00
Compare
Order Free Sample

Product Details, Specs & Videos Customer Reviews Tape Specialists

AF380 Advanced Air System
MSDS

Instruction

Make Void Fill Dunnage Pillow Packing Inflatable ...
Copy link

The versatile AF380 produces 3 dunnage types:
Bubble Wrap, Hybrid, Large Pillow

INCREDISEAL™
Advanced Air

888 . 496 . 2747

Sales@IncrediSeal.com | IncrediSeal.com

16 Stenersen Lane | Suite 4B | Hunt Valley | MD 21030